

ARB DELUXE BULL BARS & WINCH BARS

YEAR	MODEL	FEATURES	WINCHES	PART NO.
1986-95	WINCH BAR	RECESSED INDICATORS, TOW POINTS, BLACK	M6000, M8000 ^{1,2}	3424110

¹ FITMENT OF WARN M8000 WINCH MAY BE FITTED WITH MINOR MODIFICATIONS TO BAR.

² WINCH INSTALL KIT PART # 3524010 REQUIRED WHEN FITTING WINCH

IPF LIGHTING & ACCESSORIES

YEAR	RECOMMENDED LIGHTING
1986-95	800XSD, 900XS, 868CS, 968CSG

OLD MAN EMU SUSPENSION SYSTEMS

MODEL	LOCATION	DESCRIPTION	TYPE	LIFT	QUANTITY	PART NO.	
SAMURAI LEAF SPRING MODELS	FRONT	STOCK/LIGHT LOAD (0-55LBS)	SPRING	1.25"	2	CS012FB ¹	
		MEDIUM LOAD (55-125LBS)	SPRING	1.50"	2	CS012FA ¹	
			SHOCK				OME025
		HEAVY LOAD (125-200LBS)	SPRING	1.25"	2	CS012FA ¹	
			SHOCK			OME025	
	REAR	MEDIUM LOAD (0LBS TO GVW)	SPRING	1.50"	2	CS038R	
			SHOCK			OME013 ³	
		HEAVY CONSTANT (220LBS TO GVW)	SPRING	1.50"	2	CS039R	
			SHOCK			OME013 ³	
	REQ'D FOR INSTALLATION	LEAF SPRING BUSHING KIT			4	OMESB19	
U BOLTS					FOOTNOTE ⁶		
FITTING KIT				1	FK06 ⁴		
STEERING DAMPER				1	OMESD30		
OPTIONAL	TRIM SPACER				TP05		
	FRONT EXTRA LEAF				D20XL ^{5,6}		
	REAR EXTRA LEAF				D21XL ⁶		

¹ IMPORTANT: SAMURAI'S USED IN EXTREME HEAVY OFF ROAD CONDITIONS MUST HAVE EXTRA LEAF D20XL ADDED TO FRONT SPRING PACK. U BOLT OMEU61B IS ALSO REQUIRED.

² MODELS WITHOUT A FRONT STABILIZER BAR REQUIRE A FIRMER SHOCK ABSORBER THAN MODELS WITH STABILIZER BAR. CORRECT SELECTION WILL HAVE A MAJOR EFFECT ON VEHICLE HANDLING.

³ OME013 FIT ALL MODELS EXCEPT LJ80 AND LJ80II. N43 FITS ALL LJ80 AND LJ80II MODELS.

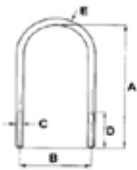
⁴ FK06 KIT FOR STABILIZER BAR.

⁵ EXTRA LEAF CAN BE FITTED FOR HEAVIER CONSTANT LOAD CARRYING ABILITY.

⁶ DUE TO U-BOLT SIZE VARIANCES, PLEASE MEASURE YOUR OE U-BOLTS AND COMPARE TO THE PART NUMBERS BELOW BEFORE ORDERING.

DESCRIPTION

DESCRIPTION	PART NO.
A=5.91" B=3.91" D=2.75"	OMEU60
A=5.79" B=3.43" D=2.36"	OMEU61
A=6.30" B=3.43" D=2.75	OMEU61B
A=5.71" B=2.87" D=2.75"	OMEU62



ARB AIR LOCKER LOCKING DIFFERENTIALS & ACCESSORIES

YEAR	AXLE	DESCRIPTION	SHAFT	SPLINE	RATIO	PART NO.
1984-98	FRONT	WITH LEAF SPRING SUSPENSION	23.9 (0.94")	22	ALL	RD75
1998-03	FRONT	JIMNY MODEL WITH 8 BOLT RG	23.9 (0.94")	23	ALL	RD87
1984 ON	REAR	1.3 LITRE MODELS ONLY	27.4 (1.08")	26	ALL	RD88